

## BYLAW 2008 - 7

### OF THE MUNICIPAL DISTRICT OF OPPORTUNITY NO. 17 In the Province of Alberta

***To establish the hamlet boundaries for Calling Lake, Alberta.***

---

**WHEREAS**, Section 59 of the *Municipal Government Act* being Chapter M-26, R.S.A 2000 empowers Council to declare any given area to be a hamlet and to designate its boundaries; and

**WHEREAS**, because development is taking place within the outlined area, it is desirable to declare any given area to be a hamlet and to designate its boundaries.

**NOW THEREFORE**, the Council of the Municipal District of Opportunity No. 17 in the Province of Alberta, duly assembled, hereby enacts the following;

1. That the lands described in Schedule "A" shall be declared as the Hamlet of Calling Lake, Alberta.
2. That the boundaries of the Hamlet of Calling Lake shall be established as outlined in orange on Schedule "B".

ALSO INCLUDED ARE ALL THE ROAD ALLOWANCES AND ROAD ALLOWANCE INTERSECTIONS IN AND ADJOINING THE ABOVE DESCRIBED LANDS.

3. That Ministerial Order 6265/87 and Bylaw 2007 – 10 are repealed in their entirety and any other bylaws applicable to boundaries.
4. That Bylaw 2008 – 7 becomes effective on the date of the third and final reading thereof.

Read a First time in Council this 8 day of October 2008.

Read a Second time in Council this 8 day of October 2008.

With Unanimous Consent, read a Third time in Council and passed this 8 day of October 2008.

  
REEVE

  
MANAGER

**SCHEDULE “A”  
(Bylaw 2008 – 7)**

**ALL IN Township 71, Range 21, West 4<sup>th</sup> Meridian**

NW 19

NW 28

SW 28

Section 29 Not Covered by Water

Section 30 Not Covered by Water

SE 31 Not Covered by Water

Section 32 Not Covered by Water

NW 33

SW 33

**ALL IN Township 71, Range 22, West 4<sup>th</sup> Meridian**

N ½ 22

N ½ 23

N ½ 24

Section 25 Not Covered by Water

S ½ 26

N ½ 26 Not Covered by Water

S ½ 27

N ½ 27 Not Covered by Water

SW 34 Not Covered by Water

SE 34 Not Covered by Water

**ALL IN Township 72, Range 21, West 4<sup>th</sup> Meridian**

NW 4

SW 4

SE 5

SW 5 Not Covered by Water

NE 5 Not Covered by Water

E ½ 8 Not Covered by Water

NW 9

SW 9

NW 16

SW 16

Section 17 Not Covered by Water

NE 19 Not Covered by Water

SE 19 Not Covered by Water

Section 20 Not Covered by Water

NW 21

SW 21

Section 29

Section 31

SW 32

**ALL IN Township 72, Range 22, West 4<sup>th</sup> Meridian**

NE 25 Not Covered by Water

SE 2 Not Covered by Water

NE 2 Not Covered by Water

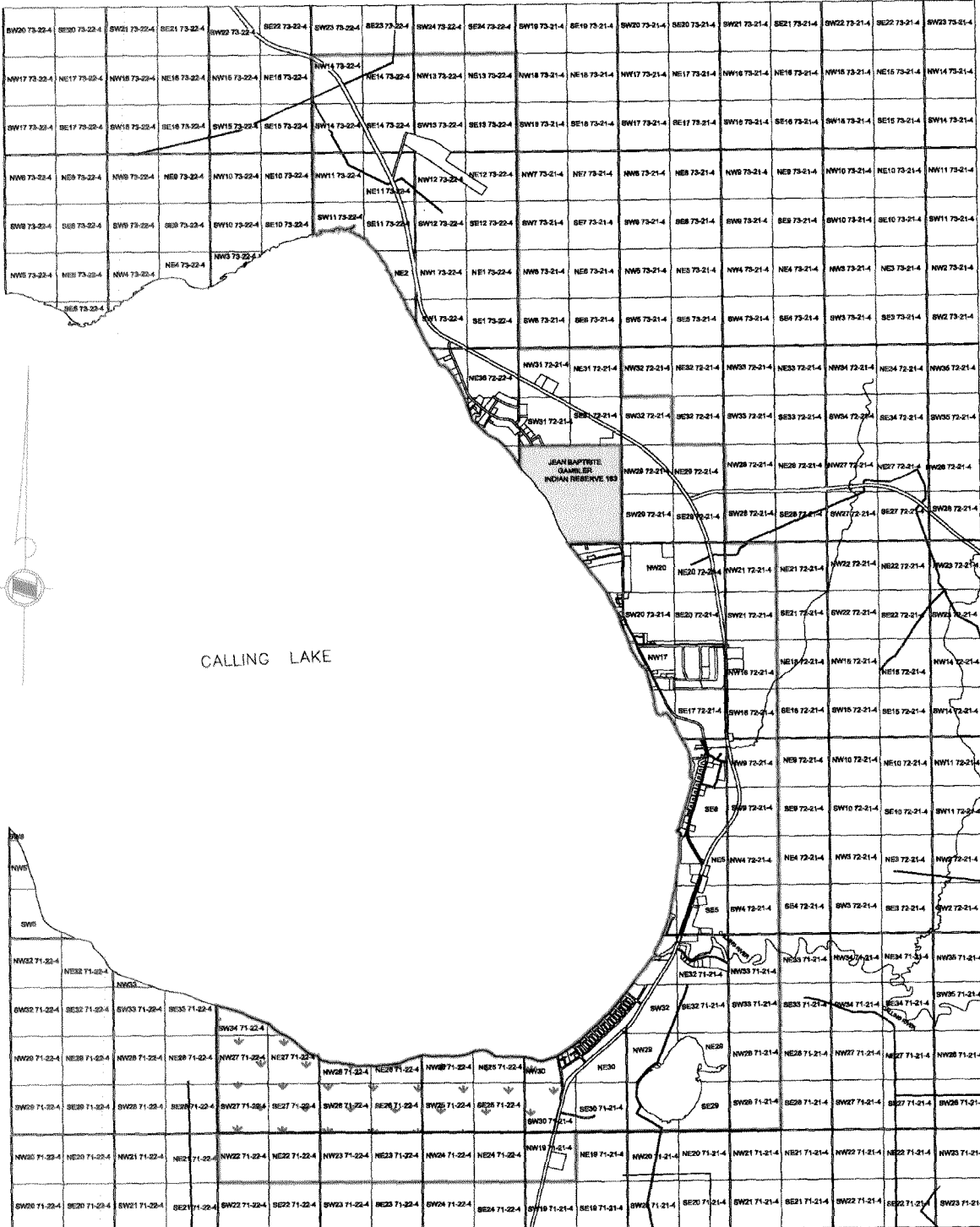
Section 11 Not Covered by Water

Section 12

Section 13

Section 14

**SCHEDULE “B**  
**(Bylaw 2008 – 7)**



CALLING LAKE

### LEGEND

PROVINCIAL PARK

NEW HAMLET BOUNDARY



**NOTE:**  
PUBLIC LAND STATUS STANDING RECEIVED FROM REMCO  
MANAGEMENT SERVICES LTD. WAS USED TO DETERMINE LAND  
WITHIN HAMLET BOUNDARIES.

HAMLET OF CALLING LAKE  
M.D. OF OPPORTUNITY No.17

**FOCUS SURVEYS LIMITED PARTNERSHIP**

BOX 2358  
SLAVE LAKE, ALBERTA T0G 2A0  
Ph.: (780) 849-5580 FAX: (780) 849-5221

REV. 

JOB NO. 010007369-000  
FILE NO. 0199MOB108